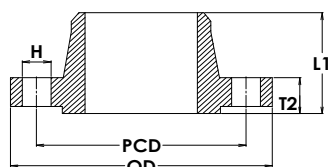
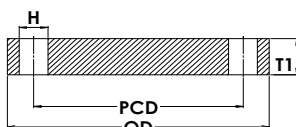


BS EN1092-1 2007 PN16



WELD NECK



BLIND

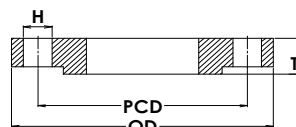
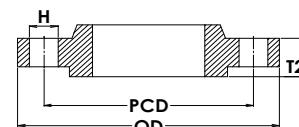


PLATE SLIP ON



HUB SLIP ON

PN 16		FLANGE THICKNESS					LTB		DRILLING DATA			PN 16	
NOMINAL PIPE SIZE		FLANGE OUTSIDE DIAMETER	THICKNESS OF FLANGE	THICKNESS OF BLIND	THICKNESS OF W/N & BOSSED SOW	BOSS LENGTH	WELD NECK LENGTH	PITCH CIRCLE DIAMETER	BOLT HOLE DIAMETER	NUMBER OF BOLT HOLES	NOMINAL PIPE SIZE		
MM	INCH	OD	T	T1	T2	L	L1	PCD	H	#	MM	INCH	
10	3/8	90	14	16	16	22	35	60	14	4	15	3/8	
15	1/2	95	14	16	16	22	38	65	14	4	15	1/2	
20	3/4	105	16	18	18	26	40	75	14	4	20	3/4	
25	1	115	16	18	18	28	40	85	14	4	25	1	
32	1 1/4	140	18	18	18	30	42	100	18	4	32	1 1/4	
40	1 1/2	150	18	18	18	32	45	110	18	4	40	1 1/2	
50	2	165	20	18	18	28	45	125	18	4	50	2	
65	2 1/2	185	20	18	18	32	45	145	18	4 (Note 2)	65	2 1/2	
80	3	200	20	20	20	34	50	160	18	8	80	3	
100	4	220	22	20	20	40	52	180	18	8	100	4	
125	5	250	22	22	22	44	55	210	18	8	125	5	
150	6	285	24	22	22	44	55	240	22	8	150	6	
200	8	340	26	24	24	44	62	295	22	12	200	8	
250	10	405	29	26	26	46	70	355	26	12	250	10	
300	12	460	32	28	28	46	78	410	26	12	300	12	
350	14	520	35	30	30	57	82	470	26	16	350	14	
400	16	580	38	32	32	63	85	525	30	16	400	16	
450	18	640	42	40	34	68	83	585	30	20	450	18	
500	20	715	46	44	36	73	84	650	33	20	500	20	
600	24	840	55	54	40	83	88	770	36	20	600	24	

- NOTES: (1) Further sizes are available from 700NB to 2000NB
 (2) This size flange can be supplied with either 4 holes or 8 holes
 (3) Stocked flanges, except blinds, are generally supplied as raised face.