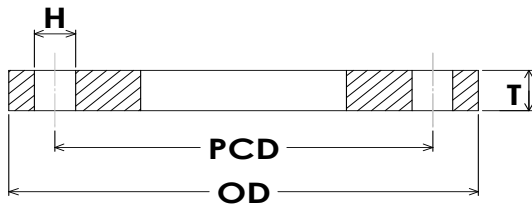
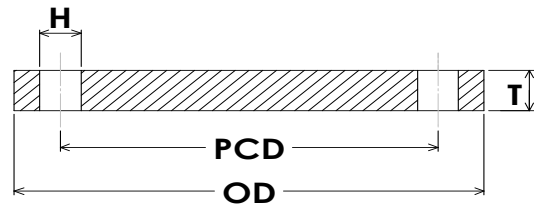


AS 4087:2004 PN16



SLIP ON



BLIND

| PN16 | | | | FLANGE THICKNESS | | DRILLING DATA | | | PN16 | | |
|-------------------|-------|-------------------------|--|---------------------|--|-----------------------|--|--------------------|----------------------|-------------------|-------|
| NOMINAL PIPE SIZE | | FLANGE OUTSIDE DIAMETER | | THICKNESS OF FLANGE | | PITCH CIRCLE DIAMETER | | BOLT HOLE DIAMETER | NUMBER OF BOLT HOLES | NOMINAL PIPE SIZE | |
| MM | INCH | OD | | T | | PCD | | H | # | MM | INCH |
| 50 | 2 | 150 | | 11 | | 114 | | 18 | 4 | 50 | 2 |
| 65 | 2 1/2 | 165 | | 11 | | 127 | | 18 | 4 | 65 | 2 1/2 |
| 80 | 3 | 185 | | 11 | | 146 | | 18 | 4 | 80 | 3 |
| 100 | 4 | 215 | | 13 | | 178 | | 18 | 4 | 100 | 4 |
| 150 | 6 | 280 | | 13 | | 235 | | 18 | 8 | 150 | 6 |
| 200 | 8 | 335 | | 19 | | 292 | | 18 | 8 | 200 | 8 |
| 225 | 9 | 370 | | 19 | | 324 | | 18 | 8 | 225 | 9 |
| 250 | 10 | 405 | | 19 | | 356 | | 22 | 8 | 250 | 10 |
| 300 | 12 | 455 | | 23 | | 406 | | 22 | 12 | 300 | 12 |
| 350 | 14 | 525 | | 30 | | 470 | | 26 | 12 | 350 | 14 |
| 375 | 15 | 550 | | 30 | | 495 | | 26 | 12 | 375 | 15 |
| 400 | 16 | 580 | | 30 | | 521 | | 26 | 12 | 400 | 16 |
| 450 | 18 | 640 | | 30 | | 584 | | 26 | 12 | 450 | 18 |
| 500 | 20 | 705 | | 38 | | 641 | | 26 | 16 | 500 | 20 |
| 600 | 24 | 825 | | 48 | | 756 | | 30 | 16 | 600 | 24 |
| 700 | 28 | 910 | | 56 | | 845 | | 30 | 20 | 700 | 28 |
| 750 | 30 | 995 | | 56 | | 927 | | 33 | 20 | 750 | 30 |
| 800 | 32 | 1060 | | 56 | | 984 | | 36 | 20 | 800 | 32 |
| 900 | 36 | 1175 | | 66 | | 1092 | | 36 | 24 | 900 | 36 |
| 1000 | 40 | 1255 | | 66 | | 1175 | | 36 | 24 | 1000 | 40 |
| 1200 | 48 | 1490 | | 76 | | 1410 | | 36 | 32 | 1200 | 48 |

- NOTES:**
- (1) Stocked flanges are generally supplied as flat face
 - (1) Raised face or "O" ring groove also available.
 - (2) Flanges may also be supplied in weld neck and bossed configuration. (hub dimensions as per AS2129)